

- Create forms online, then download them to a mobile phone
- Fill out forms on the phone and upload data to the web
- Export records to Microsoft Access and other statistical tools

Used by health ministries in more than 13 countries

Endorsed by the World Health Organization

Winner of 2009 Lemelson-MIT award, and 2008 Tech Museum award and Stockholm Challenge

Supported by funding from the UN Foundation and Vodafone Foundation



UserId	DateStamp	FacilityName	District	Consent(Interview)
joel@datadyne.org	2009-05-14 11:42:07.0			
koros@datadyne.org	2009-05-13 21:10:20.0	Mulele Health Centre	Busia District	Yes 1
koros@datadyne.org	2009-05-13 21:01:39.0	Burinda Dispensary	Busia District	Yes 1
koros@datadyne.org	2009-05-13 20:55:10.0	Bungoma District	Bungoma South District	Yes 3
koros@datadyne.org	2009-05-13 20:39:47.0	BUNGOMA DISTRICT		Yes 2
koros@datadyne.org	2009-05-13 20:39:47.0	BUNGOMA DISTRICT		Yes 1
koros@datadyne.org	2009-05-13 20:39:47.0	BUNGOMA DISTRICT		Yes 24
koros@datadyne.org	2009-05-13 20:39:47.0	BUNGOMA DISTRICT		Yes 23
koros@datadyne.org	2009-05-13 20:39:47.0	BUNGOMA DISTRICT		Yes 22
koros@datadyne.org	2009-05-13 20:39:47.0	BUNGOMA DISTRICT		Yes 21
koros@datadyne.org	2009-05-13 09:50:58.0	Babadogo Health Centre	Nairobi North	Yes 20

ID of user who created this record

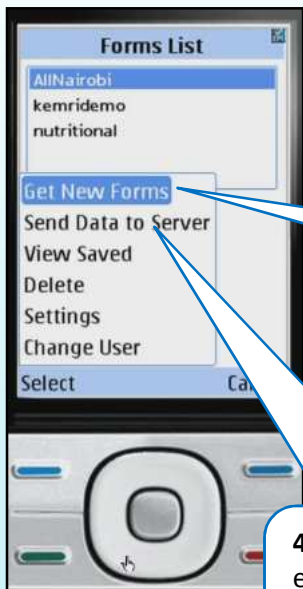
Date & time of this record

### On the Computer

- Go to [www.episurveyor.org](http://www.episurveyor.org)
- Create a free account
- Sign up for the newsletter for product updates
- Watch video tutorials

### On the Mobile Phone

1 Download application from [www.episurveyor.org/m](http://www.episurveyor.org/m)

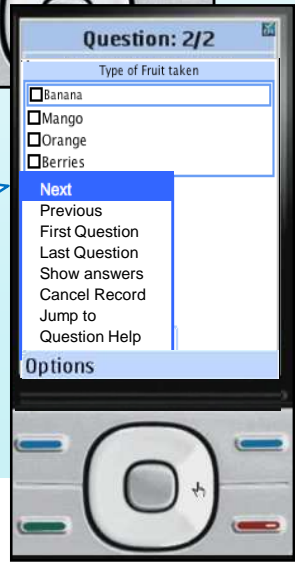


2 Login with the email and password you registered at the website

3 Download a form by choosing **Options > Get New Forms**

4 Upload records to episurveyor.org by choosing **Options > Send Data to Server**

4 Enter data on a question and move to the next question by choosing **Options > Next**



# FAQ



## How do I create forms?

First, create a free account at [www.episurveyor.org](http://www.episurveyor.org) and follow onscreen directions.

## Where do I download the application for my phone?

On the phone browser, go to [www.episurveyor.org/m](http://www.episurveyor.org/m) and click on the phone model of your phone to start downloading. System messages may pop up depending on your mobile phone and service. Press "Yes" and "Accept" for prompts requesting access and/or downloading rights.

## What phones can I use?

Find the list of supported phones at [www.episurveyor.org/m](http://www.episurveyor.org/m)

## What's the best way to learn how to use the software?

Watch a video tutorial! Go to [www.datadyne.org/episurveyor](http://www.datadyne.org/episurveyor) and follow links on right hand side to User Manuals and Video Tutorials.

## I don't have a phone, can I still try the software?

Yes, use an online phone emulator. Go to [www.episurveyor.org/emulator](http://www.episurveyor.org/emulator)

## I want to replace my paper data collection process with EpiSurveyor. Can somebody help me get started?

Absolutely! Email [support@datadyne.org](mailto:support@datadyne.org) with a description of what you'd like to do.

## I have ideas of new features for EpiSurveyor. Who do I talk to?

Email your thoughts/questions/ideas to [support@datadyne.org](mailto:support@datadyne.org)

## I am having problems connecting to the internet. What should I do?

Contact your cellular service provider to configure the internet settings on your mobile phone.

## How reliable and secure is episurveyor.org?

We have taken key precautions to make sure your data is secure, backed up, and always available online. Episurveyor.org is hosted on the premium quality server farms used by high traffic websites such as EBay<sup>®</sup> and Hilton<sup>®</sup>.

## Where is my data stored?

It can be stored by our service. Organizations that wish to store their own data can contact [support@datadyne.org](mailto:support@datadyne.org) for technical details.

## Who's using EpiSurveyor?

EpiSurveyor is used as a standard by the World Health Organization (WHO) in 13 countries in sub-Saharan Africa, and lots of other organizations around the world also use it.

## Where does EpiSurveyor come from?

Your friends at DataDyne.org

## Where is DataDyne located?

We have offices in  
Washington, DC, USA and  
Nairobi, Kenya

## What countries are using EpiSurveyor?

Kenya | Ethiopia Ghana | Senegal | Zambia Burkina Faso | Sierra Leone | Uganda | DRC Cameroon | Benin | Madagascar | Rwanda  
To be trained over 2009  
Togo | Mali | Cote d'Ivoire | Liberia | Gabon  
Burundi | Botswana | Swaziland