

- Create forms online, then download them to a mobile phone
- Fill out forms on the phone and upload data to the web
- Export records to Excel, Access or other programs

Thousands of users in more than 170 countries!

Used by WHO/PAHO, UNICEF, CDC, Abt, JSI, and many others!

Winner of Wall Street Journal Award for Tech Innovation, Lemelson-MIT award for sustainability, Tech Museum award and Stockholm Challenge



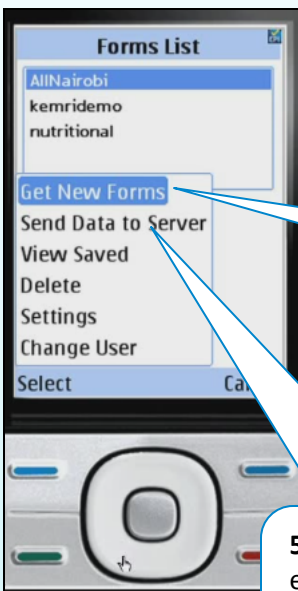
User	Date	Facility	District	Consent	Interview
joel@datadyne.org	2009-05-14 11:42:07.0			Yes	1
keros@datadyne.org	2009-05-13 21:10:20.0	Mulele Health Centre	Busia District	Yes	1
keros@datadyne.org	2009-05-13 21:01:59.0	Burinda Dispensary	Busia District	Yes	1
keros@datadyne.org	2009-05-13 20:55:10.0	Bungoma Dispensary	Bungoma South District	Yes	3
keros@datadyne.org	2009-05-13 20:39:47.0	BUNGOMA DIS		Yes	2
keros@datadyne.org	2009-05-13 20:39:47.0	BUNGOMA DIS		Yes	1
keros@datadyne.org	2009-05-13 20:39:47.0	BUNGOMA DIS		Yes	24
keros@datadyne.org	2009-05-13 20:39:47.0	Mathare North HC	Nairobi North	Yes	24
keros@datadyne.org	2009-05-13 20:39:47.0	Mathare North HC	Nairobi North	Yes	23
keros@datadyne.org	2009-05-13 20:39:47.0	Mathare North HC	Nairobi North	Yes	22
keros@datadyne.org	2009-05-13 20:39:47.0	Mathare North HC	Nairobi North	Yes	21
keros@datadyne.org	2009-05-13 20:39:47.0	Mathare North HC	Nairobi North	Yes	20

### On the Computer

- Go to [www.episurveyor.org](http://www.episurveyor.org)
- Create a free account
- Watch video tutorials
- Design your own forms to collect mobile data

### On the Mobile Phone

1 Download application from [www.episurveyor.org/m](http://www.episurveyor.org/m)

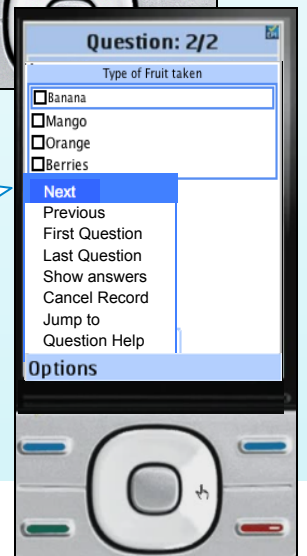


2 Login with the email and password you registered with at [www.episurveyor.org](http://www.episurveyor.org)

3 Download a form by choosing **Options > Get New Forms**

4 Enter data on a question and move to the next question by choosing **Options > Next**

5 Upload records to [episurveyor.org](http://episurveyor.org) by choosing **Options > Send Data to Server**



# FAQ



## **What are the benefits of EpiSurveyor?**

**Save money** – For one thing, you'll save a LOT of money over either paper-based data collection or other electronic systems. In a [2011 report](#), the World Bank documented a 71% decrease in data collection costs compared to paper, with improved quality.

That's because EpiSurveyor is so simple to use that you won't need programmers or consultants. You just need to know what data you would like to collect. And even the paid "pro" and "enterprise" versions of EpiSurveyor are dramatically less expensive than other commercial programs – in some cases more than 60% less expensive!

**Save time** – EpiSurveyor lets you collect data in real-time, and make better decisions faster.

## **How much does EpiSurveyor cost?**

For most users, EpiSurveyor doesn't cost anything at all. We do charge those users who want additional levels of service or support or training, and use that funding to pay for free access for everyone else.

For more information on pricing, go to [www.datadyne.org/episurveyor/pricing](http://www.datadyne.org/episurveyor/pricing)

## **How reliable and secure is EpiSurveyor?**

EpiSurveyor has been online for more than two years with thousands of users worldwide, zero downtime, and zero data loss! No other mobile data collection system can say that.

## **Where is my data stored?**

EpiSurveyor stores data using [Rackspace](#) commercial servers in several locations. Data can be stored elsewhere at additional costs (contact [support@datadyne.org](mailto:support@datadyne.org) for technical details).

## **Who uses EpiSurveyor?**

EpiSurveyor is used as a standard by the World Health Organization, and by hundreds of other organizations and thousands of individuals. Organizations using EpiSurveyor include JSI, IFRC, Abt, the Smithsonian, WHO, PAHO, UNICEF, the World Food Program, USAID, and many, many others. [Read case studies.](#)

## **Where does EpiSurveyor come from?**

EpiSurveyor is provided by DataDyne, an award-winning social business based in Washington, DC, USA and Nairobi, Kenya.

## **Can somebody help me get started? Or provide on-site training? Custom reports?**

Absolutely! DataDyne can provide custom reports, custom features, automated analysis, on-site training, and many other useful services. Just contact us at [info@datadyne.org](mailto:info@datadyne.org).

## **What's the best way to learn how to use the software?**

Watch a video tutorial! Go to <http://www.datadyne.org/episurveyor/video-tutorials>

Click on Programs > Click on EpiSurveyor > follow links on right hand side to User Manuals and Video Tutorials.

## **What phones can I use?**

Find the list of supported phones at [www.episurveyor.org/m](http://www.episurveyor.org/m)

## **I don't have a phone, can I still try the software?**

Yes, use an online phone emulator. Go to [www.episurveyor.org/emulator](http://www.episurveyor.org/emulator)

## **I am having problems connecting to the internet on my phone. What should I do?**

We can't help you with that one! Contact your cellular service provider to configure the Access Point on your mobile phone.

Read more at <http://www.datadyne.org/episurveyor/faq>